

Non-Metallic Enclosures for the Industrial and Electronic Industries

Features

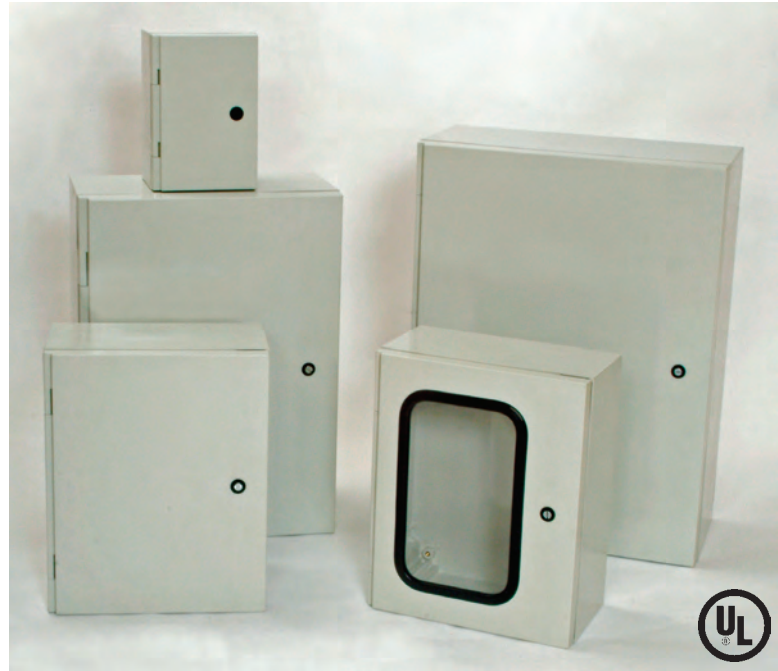
- Complete range of 7 cabinets from 12" x 8" up to 40" x 32"
- Cabinet material: halogen-free, hot moulded, self-extinguishing, fiber-glass reinforced polyester
- Internal three-point closing system with one-point entry
- Furnished with four threaded studs and bolts for mounting plate or mounting frame installation
- Door bosses for front panel mounts
- Cabinets are maintenance free and corrosion resistant
- Integrated rain shield
- Temperature resistance -58° F to +302° F
- Momentary to 392° F
- Seamless, polyurethane gasket in molded door edge channel
- ¼ turn Handle

Standards

- IEC 60439-1
- IEC 60529
- EN 60439-1
- EN 60529
- EN 50298

Approvals

- UL Listed types: 3, 3R, 3S, 4, 4X, 12 and 13 per UL 508
- CSA Listed types: 2, 3, 3R, 3S, 4, 4X, 12 and 13
- AS Listed types: 3132 - 1991
- CE Listed
- Lloyd's Register of Shipping



Applications

Contoured body provides an attractive and contemporary appearance that can be used as:

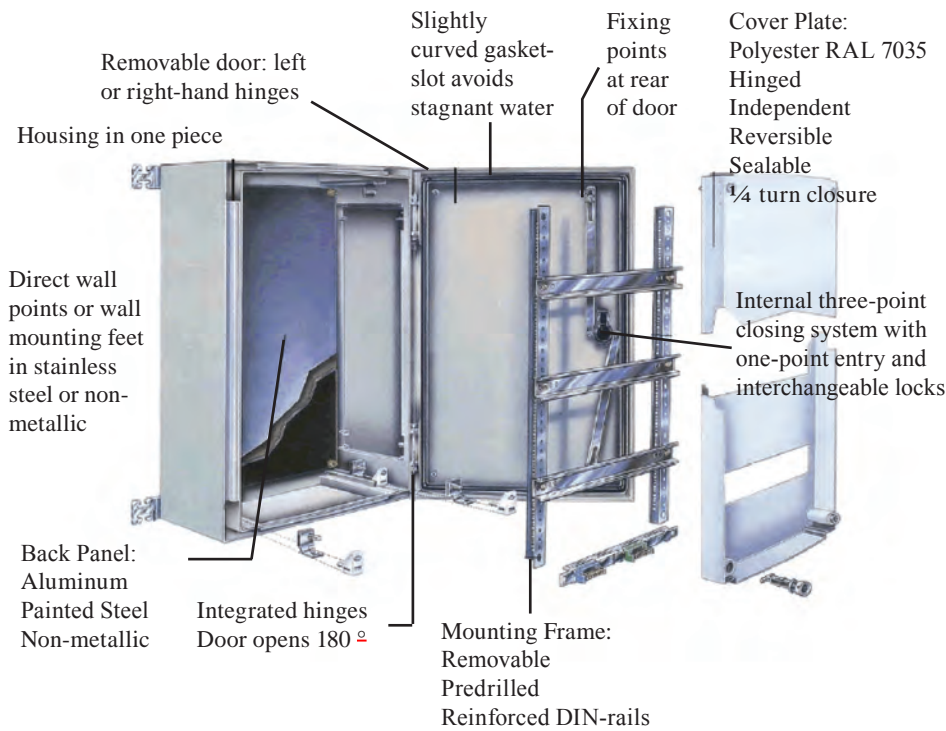
- Insulated electrical junction boxes
- Terminal wiring boxes
- Instrument housings
- Housings for electrical controls in wet, dusty and corrosive environments

Ideal for high performance applications in:

- Heavy Industry - Paper Mills, Mining Sites, Steel Mills, Lumber Production, Oil & Gas Refineries, Chemical Plants
- Food Processing, Alimentation and Brewing Industries
- Waste-water Treatment, Water Purification and Car Washes
- Public Lighting, Traffic Control and Signalization
- Marine, Shipyards and Offshore Oil Production Platforms
- Pumping, Grinding, Purification and Conveying Systems

Vynckier Enclosure Systems, Inc.

ARIA SERIES



Assessories

- Back panels
- Hinged non-metallic dead front panel
- DIN rail mounting system
- Wall mounting brackets
- Print pocket
- Locking handle
- Ventilators



- Patented door-lifter ensures that the door will take it's center position when closed
- Ergonomic closing mechanism – standard with slotted ¼ turn latch reduces closing force by 25%
- Multiple locking systems are available
- Self-adhesive rain-shield is included with each cabinet
- Easy to customise: Punching, milling, sawing, filing, drilling
- Optional gasketed or bonded windows are available
- New easy to install hinged aluminum front panel is available



| Base Models | Outside Dimensions | | | Inside Dimensions | | | Weight lb (kg) | Back Plates in (mm) |
|-------------|--------------------|-------------|-------------|-------------------|-------------|-------------|----------------|---------------------------|
| | H | W | D | H | W | D | | |
| AN1208 (mm) | 12.40 (315) | 8.46 (215) | 6.69 (170) | 10.83 (275) | 6.69 (170) | 5.83 (148) | 5.25 (2.4) | 9.84 x 5.91 (250 x 150) |
| AN1612 (mm) | 16.34 (415) | 12.40 (315) | 6.69 (170) | 14.76 (375) | 10.63 (270) | 5.83 (148) | 8.12 (3.7) | 13.78 x 9.84 (350 x 250) |
| AN2016 (mm) | 20.28 (515) | 16.34 (415) | 9.06 (230) | 18.70 (475) | 14.57 (370) | 8.11 (206) | 14.13 (6.4) | 17.72 x 13.78 (450 x 350) |
| AN2416 (mm) | 24.21 (615) | 16.34 (415) | 9.06 (230) | 22.64 (575) | 14.57 (370) | 8.11 (206) | 16.11 (7.3) | 21.65 x 13.78 (550 x 350) |
| AN2820 (mm) | 28.94 (735) | 21.06 (535) | 10.63 (270) | 26.57 (675) | 18.50 (470) | 9.68 (246) | 26.23 (11.9) | 25.98 x 17.72 (660 x 450) |
| AN3325 (mm) | 32.87 (835) | 25.00 (635) | 11.81 (300) | 30.51 (775) | 22.44 (570) | 10.86 (276) | 35.76 (16.2) | 29.53 x 21.65 (750 x 550) |
| AN4032 (mm) | 40.75 (1035) | 32.87 (835) | 11.81 (300) | 38.39 (975) | 30.31 (770) | 10.86 (276) | 51.00 (23.1) | 37.40 x 29.53 (950 x 750) |

DT Cover with Hinged Transparent Door

Features

- 5 sizes ranging from 11.88" x 7.32" to 11.88" x 23.78"
- Cabinet material: Halogen-free, hot molded, self-extinguishing, fiber-glass reinforced polyester
- Clear transparent polycarbonate hinged cover is temperature resistant to 248° F
- Mounts to any surface and maintains ratings up to NEMA 4X
- Maintenance free and corrosion resistant
- Seamless, polyurethane gasket in molded door edge channel
- Non-metallic enclosure corner screws
- Optional Depth Extensions are available

Standards

- IEC 60439-1 • IEC 60529
- EN 60439-1 • EN 60529
- EN 50298

Approvals

- UL Listed types: 3, 3R, 4, 4X, 12 & 13 per UL 508
- CSA Listed types: 2, 3, 3R, 4, 4X, 12 & 13
- Lloyds of London
- CE Marking



Applications

Exclusive to Vynckier, DT Cover is an accessory product that allows full view of instrumentation, while protecting the system's monitors, push-buttons, etc. The hinged transparent door allows full access to components and controls when needed, without constant exposure to the outside environment.

Customers benefit from reduced system costs, since instruments and components are enclosed and don't require high protection standards.

Vynckier Enclosure Systems, Inc.

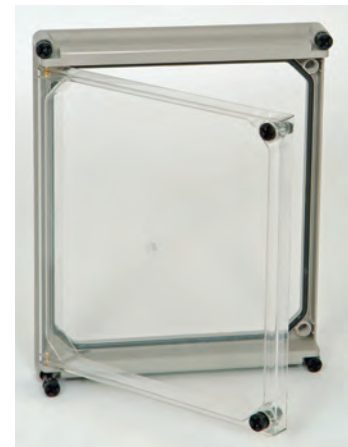
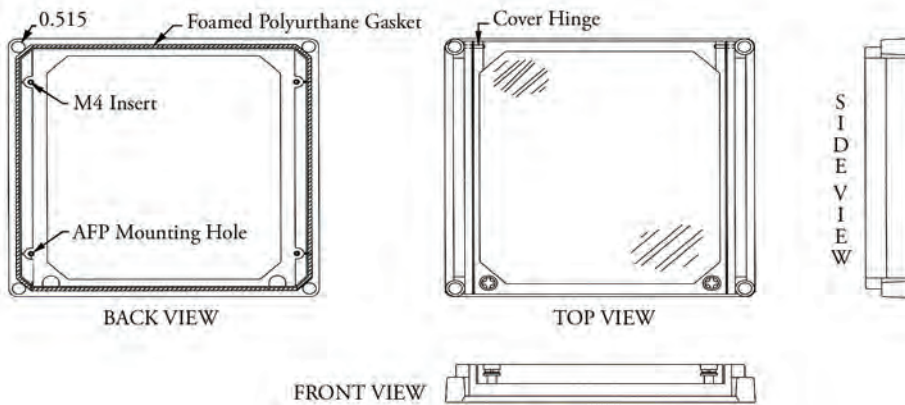


DT Cover is ideal for conditions that require access to operation controls and instruments. Customers benefit from reduced instrument maintenance and replacement costs, since components are protected from corrosive environments including dust, moisture, chemicals, and residue from equipment washdowns.

- Window is impact and corrosion resistant clear polycarbonate with two non-metallic screws.
- Window Frame is rugged, corrosion resistant FRP
- Hinges are corner-mounted, wing type stainless steel



UL Recognized Product which allows customer to submit entire application for UL Listing of product.



| Catalog Number | Outside Dimensions | | | Inside Dimensions | | | Weight lb. |
|-------------------|--------------------|-------------|-----------|-------------------|-------------|-----------|------------|
| | H | W | D | H | W | D | |
| A31-DT COVER (mm) | 11.88 (302) | 7.32 (186) | 1.77 (45) | 10.25 (260) | 4.32 (109) | 1.65 (42) | 2.05 |
| A41-DT COVER (mm) | 11.88 (302) | 11.88 (302) | 1.77 (45) | 10.25 (260) | 8.84 (224) | 1.65 (42) | 2.27 |
| A71-DT COVER (mm) | 11.88 (302) | 14.68 (372) | 1.77 (45) | 10.25 (260) | 11.60 (294) | 1.65 (42) | 3.13 |
| A51-DT COVER (mm) | 11.88 (302) | 19.2 (488) | 1.77 (45) | 10.25 (260) | 16.12 (409) | 1.65 (42) | 3.55 |
| A61-DT COVER (mm) | 11.88 (302) | 23.72 (604) | 1.77 (45) | 10.25 (260) | 20.62 (523) | 1.65 (42) | 4.55 |

Superpolyrel/Polysafe Series Multipurpose Polyester Enclosures

Features

- Superpolyrel Series consists of seven cabinets, ranging from 20" x 30" to 50" x 40" at 15.75" deep
- Polysafe Series consists of fourteen cabinets, ranging from 20" x 20" to 50" x 40" at 12.6" deep
- Can be coupled in height, width and depth for wall mounting and freestanding units
- 3 or 5 point latching mechanism
- Maintenance-free and corrosion resistant for outdoor or indoor applications
- Bases and covers are hot compression molded from halogen free, self-extinguishing fiberglass reinforced polyester
- Resists wide temperature range: -58°F to +302°F (-50°C to +150°C) momentary +392°F (200°C)

Standards

- IEC 439-1
- IEC 529 - Rated IP65-11
- EN 60439-1
- CENELEC EN 60529

Approvals

- UL Listed types: 3, 3R, 3S, 4, 4X, and 12
- CSA Listed types: 2, 3, 3R, 3S, 4, 4X, and 12
- Lloyd's Register of Shipping



Applications

These stylized, world class enclosures assure extended performance in extended exposure to UV rays. They are highly effective for electrical/electronic controls with window options that provide easy visual inspection of interior components.

Commercial: Leisure (market places, camping sites, harbors for pleasure crafts, amusement parks), fuel stations, car washes, laundrettes and laundries, service enclosures for construction yards

Industrial: Shipyards, mining, automotive, paper and pulp, food and beverage, petro-chemical, transformers heavy industry, system monitoring

Utilities: Waste management, communications, water treatment plants, cable television (CATV), energy distribution (electricity, gas, water), traffic management, traffic signaling systems, railways, public transport, public lighting

Superpolyrel Product Information

| Base Models | Outside Dimensions | | | Inside Dimensions | | | Weight lb (kg) | Back Plates in (mm) |
|-----------------------|--------------------|-----------------|----------------|-------------------|-----------------|----------------|----------------|-------------------------------|
| | H | W | D | H | W | D | | |
| SP*2030^DA (mm) | 19.69 (500) | 29.53 (750) | 15.75 (400) | 16.14 (410) | 25.98 (660) | 13.98 (355) | 38 (17.2) | 15.75 x 25.60 (400 x 650) |
| SP*3020^DA (mm) | 29.53 (750) | 19.69 (500) | 15.75 (400) | 25.98 (660) | 16.14 (410) | 13.98 (355) | 38 (17.2) | 25.60 x 15.75 (650 x 400) |
| SP*3030^DA (mm) | 29.53 (750) | 29.53 (750) | 15.75 (400) | 25.98 (660) | 25.98 (660) | 13.98 (355) | 49 (22.2) | 25.60 x 15.75 (650 x 400) |
| SP*3040^DA (mm) | 29.53 (750) | 39.37 (1000) | 15.75 (400) | 25.98 (660) | 35.83 (910) | 13.98 (355) | 57 (25.8) | 25.60 x 15.75 (650 x 400) |
| SP*4030^DA (mm) | 39.37 (1000) | 29.53 (750) | 15.75 (400) | 35.83 (910) | 25.98 (660) | 13.98 (355) | 57 (25.8) | 35.34 x 25.60 (900 x 650) |
| SP*4040^DA (mm) | 39.37 (1000) | 39.37 (1000) | 15.75 (400) | 35.83 (910) | 35.83 (910) | 13.98 (355) | 71 (32.1) | 35.34 x 25.60 (900 x 650) |
| SP*5030^DA (mm) | 49.21 (1250) | 29.53 (750) | 15.75 (400) | 45.67 (1160) | 25.98 (660) | 13.98 (355) | 70 (31.7) | 45.25 x 25.60 (1150 x 650) |
| SP*4050/2^DA> (mm) | 39.37 (1000) | 49.21 (1250) | 15.75 (400) | 35.83 (910) | 45.67 (1160) | 13.98 (355) | 85 (38.5) | 35.34 x 25.60 (900 x 650) |
| SP*5040/2^DA> (mm) | 49.21 (1250) | 39.37 (1000) | 15.75 (400) | 45.67 (1160) | 35.83 (910) | 13.98 (355) | 85 (38.5) | 45.25 x 25.60 (1150 x 650) |

> Double Door units are UL listed for Type 4X

* Complete your part number with one of the following:

G for gasketed window (NEMA 4X)

B for bonded window (UL listed for Type 4X)

^ E1 for one depth extension (Depth = 27.75; Inside Depth = 25.98)

E2 for two depth extension (Depth = 39.75; Inside Depth = 37.98)



Inner Door / Dead-front Ready



Industrial & Commercial Control Panels



Vertical and Horizontal Assemblies



Modifiable Enclosures

Polysafe Product Information

| Base Models | Outside Dimensions | | | Inside Dimensions | | | Weight lb (kg) | Back Plates in (mm) |
|-----------------------|--------------------|------------------|----------------|-------------------|-----------------|----------------|----------------|-------------------------------|
| | H | W | D | H | W | D | | |
| PS*2020^A (mm) | 19.70 (500) | 19.70 (500) | 12.60 (320) | 16.14 (410) | 16.14 (410) | 11.25 (286) | 25 (11.3) | 16.14 x 16.14 (410 x 410) |
| PS*2030^A (mm) | 19.70 (500) | 29.53 (750) | 12.60 (320) | 16.14 (410) | 25.98 (660) | 11.25 (286) | 37.5 (17) | 16.14 x 25.98 (410 x 660) |
| PS*3020^A (mm) | 29.53 (750) | 19.70 (500) | 12.60 (320) | 25.98 (660) | 16.14 (410) | 11.25 (286) | 37.5 (17) | 25.98 x 16.14 (660 x 410) |
| PS*3030^A (mm) | 29.53 (750) | 29.53 (750) | 12.60 (320) | 25.98 (660) | 25.98 (660) | 11.25 (286) | 43.8 (19.8) | 25.98 x 25.98 (660 x 660) |
| PS*3040^A (mm) | 29.53 (750) | 39.37 (1000) | 12.60 (320) | 25.98 (660) | 35.83 (910) | 11.25 (286) | 56 (25.4) | 25.98 x 35.83 (660 x 910) |
| PS*3050/2^A> (mm) | 29.53 (750) | 49.21 (11250) | 12.60 (320) | 25.98 (660) | 45.67 (1160) | 11.25 (286) | 69 31.3 | 25.98 x 45.66 (660 x 1160) |
| PS*4020^A (mm) | 39.37 (1000) | 19.69 (500) | 12.60 (320) | 35.83 (910) | 16.14 (410) | 11.25 (286) | 43.8 (19.8) | 35.83 x 16.10 (910 x 410) |
| PS*4030^A (mm) | 39.37 (1000) | 29.53 (750) | 12.60 (320) | 35.83 (910) | 25.98 (660) | 11.25 (286) | 56 (25.4) | 35.83 x 25.98 (910 x 660) |
| PS*4040^A (mm) | 39.37 (1000) | 39.37 (1000) | 12.60 (320) | 35.83 (910) | 35.83 (910) | 11.25 (286) | 69.6 (31.5) | 35.83 x 35.83 (910 x 910) |
| PS*4040/2^A (mm) | 39.37 (1000) | 39.37 (1000) | 12.60 (320) | 35.83 (910) | 35.83 (910) | 11.25 (286) | 69.6 (31.5) | 35.83 x 35.83 (910 x 910) |
| PS*4050/2^A> (mm) | 39.37 (1000) | 49.21 (11250) | 12.60 (320) | 35.83 (910) | 45.67 (1160) | 11.25 (286) | 83.5 37.8 | 35.83 x 45.67 (910 x 1160) |
| PS*5030^A (mm) | 49.21 (1250) | 29.53 (750) | 12.60 (320) | 45.67 (1160) | 25.98 (660) | 11.25 (286) | 69.6 (31.5) | 45.67 x 25.98 (1160 x 660) |
| PS*5040/2^A> (mm) | 49.21 (1250) | 39.37 (1000) | 12.60 (320) | 45.67 (1160) | 45.67 (1160) | 11.25 (286) | 83.5 37.8 | 45.67 x 35.83 (1160 x 910) |
| PS*5040/2^LA> (mm) | 49.21 (1250) | 39.37 (1000) | 12.60 (320) | 45.67 (1160) | 35.83 (910) | 11.25 (286) | 83.5 37.8 | 45.67 x 35.83 (1160 x 910) |

> Double Door units are UL listed for Type 4X

* Complete your part number with one of the following:

G for gasketed window (UL listed for Type 4X)

B for bonded window (NEMA 4X)

^ E1 for one depth extension

E2 for two depth extension

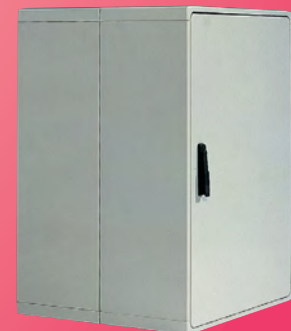


Front & Rear Door
Capability



Floor Pad & Rainhood
Options

Modular Assemblies



Superpolyrel/Polysafe Series

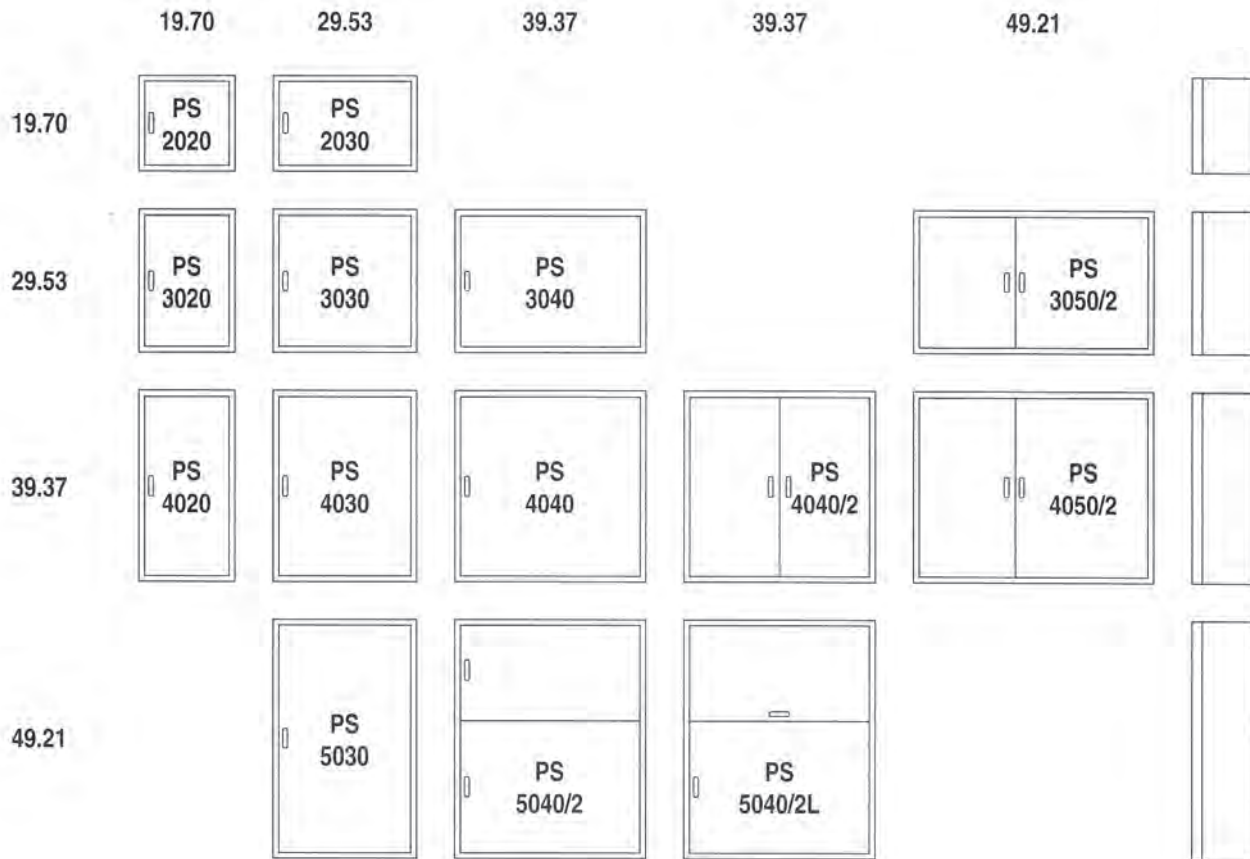
Options

- Windows alternatives
 - Bonded
 - Gasketed
- Front Door alternatives
- Side & Cover Panels
- Inner Door / Dead-front
- Pad mounting
- Wall mounting
- Silk screening
- Coupling Kits
- Vertical, Horizontal, and Depth Extensions
- Internal Mounting Frames
- Custom modifications
- Back Panels

Assessories

- Rainhoods
- Vents
- Floorpads
- Doorstops
- Rear Doors
- Key-Lock cylinders
- Padlockable handles
- Print Pockets
- Adjustable Mounting Hardware for back panels
- Hinged Front Panels
- 19" Rack Mounts
- Stainless Steel Mounting Feet

Door Configurations



VJ/RVJ Series JIC/NEMA Rated Enclosures

Features

- VJ - Seven sizes ranging from inside dimensions of 6" x 6" to 18" x 16"
- RVJ - Five sizes ranging from inside dimensions of 10" x 8" to 18" x 16"
- Enclosures are maintenance free and corrosion resistant
- Bases and covers are hot compression molded from halogen free, self-extinguishing fiberglass reinforced polyester that can withstand continuous temperatures from -58°F up to 302°F
- Gaskets - polyurethane foam
- Molded on mounting flange
- VJ (flat cover) and RVJ (raised cover) enclosures are designed in accordance with the Joint Industrial Council (JIC) - USA

Standards

- IEC 439-1 • EN 50298
- IEC 529 - Rated IP66-11
- CSA Certified per C22.2 No. 94

Approvals

- UL Listed types: 3, 3R, 4, 4X, 12 & 13 per UL 508
- CSA Listed types: 3, 3R, 4, 4X, 12 & 13
- AS Listed types: 3131 - 1991
- CE Marking



Applications

VJ and RVJ enclosures are designed for use as electrical junction boxes in highly corrosive environments. Examples include:

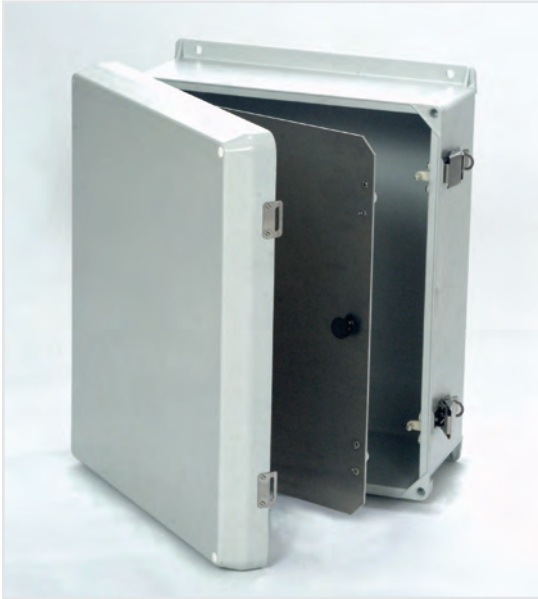
Chemical Processing Plants, Oil Refineries, Marine Installations, Waste Water Treatment Plants, Electroplating Plants, Food Processing Plants, and Agricultural Environments.

Enclosures are highly suitable as both indoor and outdoor instrument housings. Window enclosures provide easy visual inspection of interior components.

All enclosures can be modified to customer specifications!

Vynckier Enclosure Systems, Inc.

VJ/RVJ SERIES



| Base Models | Inside Dimensions | | | Weight lb (kg) |
|----------------|-------------------|----------------|----------------|-------------------|
| | H | W | D | |
| VJ606 (mm) | 6.00 (152) | 6.00 (152) | 4.10 (104) | 2.8 (1.27) |
| VJ806 (mm) | 8.00 (203) | 6.00 (152) | 4.10 (104) | 3.8 (1.72) |
| VJ1008 (mm) | 10.00 (254) | 8.00 (203) | 4.59 (1176) | 4.8 (2.17) |
| VJ1210 (mm) | 12.00 (305) | 10.00 (254) | 4.74 (120) | 6.3 (2.85) |
| VJ1412 (mm) | 14.00 (356) | 12.00 (305) | 5.74 (146) | 8.6 (3.90) |
| VJ1614 (mm) | 16.00 (406) | 14.00 (356) | 5.74 (146) | 10.6 (4.80) |
| VJ1816 (mm) | 18.00 (457) | 16.00 (406) | 8.62 (219) | 14.0 (6.34) |

| Base Models | Inside Dimensions | | | Weight lb (kg) |
|-----------------|-------------------|----------------|----------------|-------------------|
| | H | W | D | |
| RVJ1008 (mm) | 10.00 (254) | 8.00 (203) | 6.90 (157) | 4.9 (2.2) |
| RVJ1210 (mm) | 12.00 (305) | 10.00 (254) | 6.37 (162) | 6.5 (2.9) |
| RVJ1412 (mm) | 14.00 (356) | 12.00 (305) | 7.37 (187) | 8.8 (4.0) |
| RVJ1614 (mm) | 16.00 (406) | 14.00 (356) | 7.37 (187) | 10.8 (4.9) |
| RVJ1816 (mm) | 18.00 (457) | 16.00 (406) | 10.19 (259) | 14.3 (6.9) |



Options & Assessories

- Window Options
 - Bonded
 - Clear View
 - Gasketed
- Hinged Front Panels
- Hinge Options
- Latching Options
 - W • HW • HPLL • HWPL
- Vent Options
 - MEDV • Louver
- Enclosure Modifications
 - Silk screen • EMI/RFI Shielding

The "Platinum Plus" light grey color is cleaner, cooler and more aesthetically pleasing. Now users can enjoy the physical benefits of better heat reflection and better UV resistance, due to the lighter color.

Custom Colors are also available.