

# ALLEN

E L E C T R I C

S U P P L Y C O



## ***A full line electrical distributor:***

*Serving contractors, OEMs, and industrial,  
institutional & commercial users*

*Supplies, wire & cable, controls & drives, lighting,  
distribution equipment, heating, fans & more*

*Quality products from major manufacturers*

*32,000 square foot facility*

*Prompt delivery*

*Accurate billing*

*Modern supply counter area*

*Value added services*

*Lighting design*

*Energy savings analysis*

*Up-to-date computer systems*

*Training for customers & employees*

*People serving people*

*ISO 9001:2000 Registered*

***Committed To Quality***

## *About Us*

Allen Electric Supply Co. is a family owned business established in 1959. We operate a single-house distributorship out of Livonia, Michigan. We are proud to have many knowledgeable associates who have been with our company for many years.

We are in the business of selling quality service and quality products. Accurate and prompt delivery and billing, as well as quick response to customer inquiries, are accomplished daily by our staff. We utilize efficient warehousing, office and computer systems. But, nonetheless, it is the people that count the most.

Each of our company's associates knows and believes that his or her level of performance on the job affects customer satisfaction and, ultimately, the success of our company. We are truly proud and grateful that all the people who make up Allen Electric want to be part of a winning team.

## *Our Vision*

We will be the primary provider of the range of electrical supplies and equipment that we actively stock and promote to electrical contractors, original equipment manufacturers and various industrial, commercial and institutional users whose business values are similar to our own.

## *Our Values*

We respect the dignity and the rights of each of our employees. We maintain high ethical standards and respect in our dealings with our customers and vendors. We recognize that service, responsiveness and integrity are keystones of a successful business relationship. We strive for excellence in everything we do.

## *Our Commitment To Quality*

At Allen Electric Supply Co. we believe that quality is achieved only when the products and services that we provide a customer meet or exceed the specifications, requirements and expectations of the customer. Our management is fully committed to a goal of 100% quality. We enlist the support, and encourage the participation, of all the members of our organization in attaining this goal. Further, we seek out a select group of suppliers, and only those suppliers, whose own commitment to quality is equal to ours.

Allen Electric Supply Co. recognizes the need to continuously improve the levels and types of services and products that we provide to our customers. The need to improve is interpreted as both an individual need and an organizational need. Continuous improvement in all areas of our business will be the means of approaching, and possibly achieving, our goal of 100% quality.

### *Value Added Services*

- Product selection assistance
- Shipping from local inventory
- Easy-Unload enclosed delivery trucks
- Project Construction: Detailed take-off, quotation and premier submittal process
- Job Management: Customized project arrangements to ease your burden
- Job kitting / Job packing
- Electronic Commerce: Available for various transactions including Power-Order confirmations.
- Technical information & support
- Safety Solutions: Arc flash and downtime reduction training programs.
- Lighting design and layout services
- Energy savings analysis. Value Analysis.
- Innovative solutions: Photo and proximity sensing; programmable control; IEC & NEMA controls; coordinated circuit protection; ground monitoring; predictive maintenance.
- Training seminars: For products of importance to you. At your facility or our training center.

# Line Card

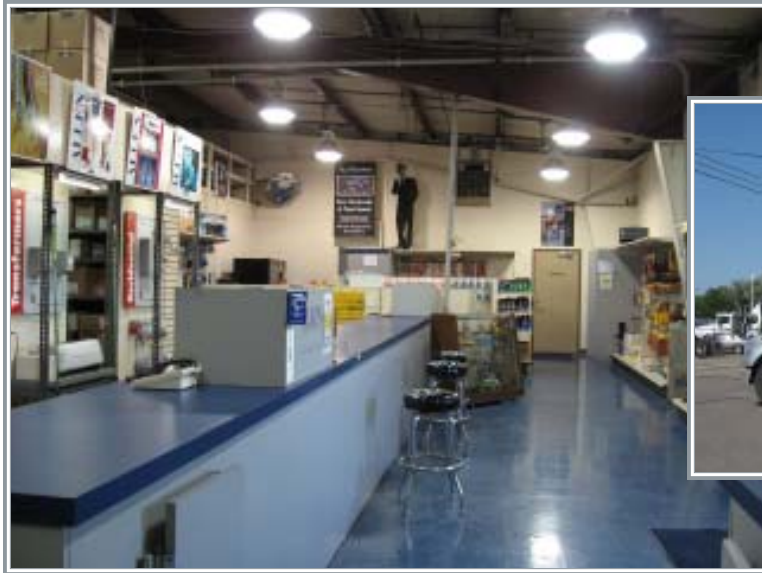
Following are some of the brand names that are available from us. Other brands not listed below are also available. Please contact us with any questions. Brands that appear in **bold** text receive our most substantial investments in terms of stock or promotional effort.

<b>3M</b>	Carolina High Mast	Gardco	Litelab	Reelcraft
<b>Acme Transformer</b>	Cerro	<b>Gedney</b>	<b>Lithonia</b>	Rejuvenation
ACS-America Cable Systems	Chalfant	General Cable	Liton	<b>Remke</b>
Acuity	Chloride	<b>General Electric:</b>	Louis Poulsen	Rig-A-Lite
Adalet	Circle D	GE Power,	LSI	<b>Robroy</b>
<b>Advance Transformer</b>	Clark	Control, Drives,	<b>Lutron</b>	Scott Architectural
Aetna Insulated	Cobra	Distribution,	Lyte Poles	SelectaSwitch
<b>AFC</b>	Coleman Cable	Lighting, Lamps,	Magnetek	Sensorswitch
Air King	Columbia	Security & more	Markel	Shakespeare
<b>Airmaster</b>	Contech	<b>Gleason</b>	<b>Marley</b>	Signal-Tech
Alan Wire	<b>Cooper Lighting</b>	Greenlee	McGill	<b>Signmark</b>
Alcan	Cooper Power	Guth	McPhilben	Simkar
Alflex	Cope, TJ	<b>Halo</b>	<b>Meltric</b>	Sola
Alkco	Corelite	Hampstead	MGM	Southwire
<b>Allied Conduit</b>	CRC	Hanover	Midwest Electric	Spaulding
Allied Moulded	Crescent	Harger	Milbank	Spectrum
Alpha Wire	Crouse-Hinds	Hevi-Duty	Mill Specialties	Stonco
American Dryer	Danfoss	Honeywell/Genesis	Minerallac	Sunbelt
American Glass	Daybrite	Hubbell	<b>Moeller</b>	Synertech
American Insulated Wire	Delray Lighting	Hydrel	Mueller	Targetti
American Polywater	Dual-Lite	<b>Ideal</b>	Mulberry	Tech Lighting
Anamet	DuraCell	<b>IlSCO</b>	<b>Myers</b>	Technitrac
Antares	Duray	Indalex	Neer	Thermoweld
<b>Appleton</b>	Edison	<b>Insul-8</b>	Nelson Firestop	<b>Tork</b>
<b>Arlington</b>	<b>Edwards</b>	Intelligent	<b>Nicor</b>	Translite
Auroralight	<b>EGS</b>	Intermatic	NSI	Trim-Lok
Avanti	<b>Electri-Flex</b>	Ipex	Nutone	Universal
Bega	Elliptipar	Iwasaki	Olsun	Valmont Lexington
Beghelli USA	EMC	Jefferson	Omega	Vantage
<b>Bender</b>	Emco	Joslyn	Omni Cable	Venture
Beta Lighting	Emergi-Lite	<b>Joy</b>	<b>OZ</b>	Visa
Big Beam	<b>E-Mon</b>	Kaf-Tech	<b>Panduit</b>	Vista
<b>B-Line</b>	Encore	Kenall	<b>Paragon</b>	Wago
Bodine	Erico	Kidde	Paramount	<b>Watt Stopper</b>
<b>Brady</b>	Essex	<b>Killark</b>	<b>Pass &amp; Seymour</b>	Weber
BRK	ETC Controls	Kim Lighting	Payne-Sparkman	Wemco
Broan	Etcon	Kirlin	Peerless	Wheatland
<b>Bussmann</b>	Eurobex	<b>Klein Tools</b>	<b>Pepperl+Fuchs</b>	Wide-Lite
Caddy	<b>Federal Signal</b>	<b>Klockner</b>	Picoma	Wiegmann
Cal Pipe	Finelite	Knopp	PMC	Williams, H.E.
<b>Cantex</b>	<b>Fluke</b>	Kurt Versen	Pyle National	Winco
Capri	Focal Point	Leviton	Quigley	<b>Wiremold</b>
Carlson	Forecast	Lew Electric	Rab	Woodhead
	Fostoria	Lightolier	Raco	Workhorse
	Fuji Drives	Linemaster	Rawl	Zenith
	Fynetics	LiteControl	Red Seal	Zumtobel

# ALLEN

E L E C T R I C

S U P P L Y C O



**Allen Electric Supply Co.**  
31750 Plymouth Road  
PO Box 510300  
Livonia, Michigan 48151-6300

[www.allenelectric.com](http://www.allenelectric.com)  
[service@allenelectric.com](mailto:service@allenelectric.com)  
**Phone: 734.421.9300**  
Fax: 734.421.0186